

**RENO MATTRESS LIFTING FRAME**  
up to 6 x 2 x 0.3m Renos

<b>Equipment Number</b>			
<b>Customer</b>			
<b>Dispatch/Receipt</b>	Date Out    /    /	Date In    /    /	
<b>Store Location</b>			
<b>Expected Return Date</b>			

Item Number	Number of items	Item name	Checked OUT	Checked IN	Comments
1	1	Steel Frame			
2	21	Small Lifting Chains, incl. Hooks, Shackles & Service Tags			
3	1	Documentation (4 pages)			

This equipment has received an in-service inspection and was found to have no obvious defects.

**CHECKED OUT BY**

**CHECKED IN BY**

Name:

Name:

Signature:

Signature:

**Comments:** \_\_\_\_\_  
\_\_\_\_\_  
\_\_\_\_\_

**Dear Customer**

On receipt of this equipment, please check all equipment has been received, ensure your site staff read and understand the operating, maintenance and safety information, and use the equipment in a safe manner.

- You are responsible for the safe operation of the equipment and the safety of your staff.
- Standard Occupational, Health and Safety guidelines should be followed as per normal site operations. Site safety and safe work practices are your responsibility.
- At the conclusion of the use of the equipment, please clean the equipment, repack it for transportation and return to Geofabrics.
- Please advise if there are any missing parts. All equipment usage must be in accordance with Geofabrics' Hire Agreement. You will be charged for any damaged or missing components.

**RENO MATTRESS LIFTING FRAME – OPERATING AND SAFETY INSTRUCTIONS**

**WARNING!**

- Any alterations to this hire equipment may prove dangerous to the operator and will be in breach of the Equipment Hire Agreement.
- Service must only be performed by an authorised Geofabrics service organisation or representative.
- Please contact Geofabrics (0800 60 60 20) for return of this equipment or servicing if it is found to be faulty.
- All hire related documentation, operating and safety instructions are available on our website ([www.geofabrics.co.nz](http://www.geofabrics.co.nz)).

Top lifting chains not supplied (see note below)

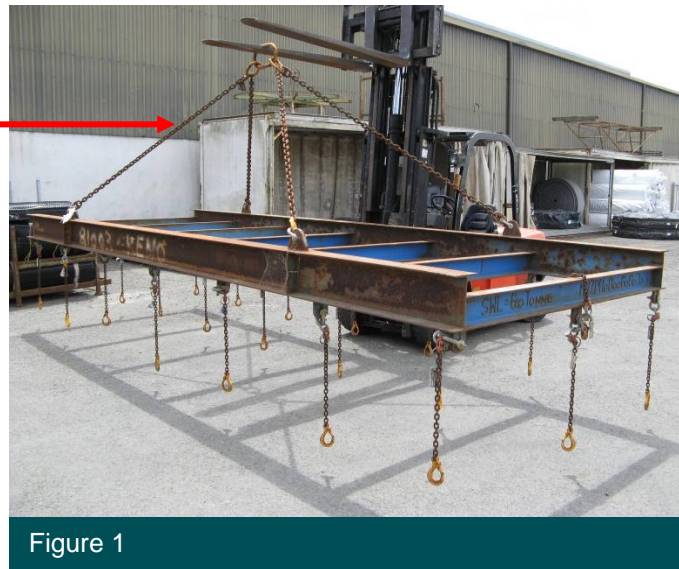


Figure 1

**Note: Top four chains are not supplied by Geofabrics. Customer must select the appropriate certified chains to support the weight of the frame and filled Reno mattress specified in the project.**

The Reno Mattress Lifting Frame is designed to be used as an attachment to suitable equipment for the installation of prefilled Reno Mattresses in suitable construction areas.

**Pre-operational considerations**

- Before operating the Reno Mattress Lifting Frame, it is important that you read and understand the maintenance and safety precautions outlined below and in the Equipment Hire Agreement document (Use and Maintenance).
- Contact Geofabrics (0800 60 60 20) if you do not understand any of the instructions in this document.
- To operate the Reno Mattress Lifting Frame, operators must be in good physical and mental condition. Do not operate if on medication or under the influence of alcohol or drugs. Seek medical advice if unsure.

- As the installation of Reno mattress products is considered a construction activity, the contractor using the hire equipment must prepare and implement a site safety plan and lifting plan that incorporates the safe work methods for high risk work involving the Reno Mattress Lifting Frame.
- The user must select a fit for purpose chain sling (Fig 1 not supplied) of adequate strength and length for the lifting of the main frame and filled mattress. Chain angle should not put the lifting eyes under any stress that may cause damage to the main frame lifting eyes and shackles.

### **Safety Precautions and Working Techniques**

- The Reno Mattress Lifting Frame is suspended / slung from excavators, cranes and other pieces of mobile plant. Site specific safety precautions must be observed to reduce the risk of people being hit / struck by the mobile apparatus.
- Always use appropriate personal protective equipment that includes but not limited to safety boots, riggers gloves, high visibility clothing (shirt or tabard), hard hats, safety eye wear with side protectors, etc. Keep all body parts clear of the equipment at all times when the equipment is in use.
- Establish an exclusion zone around the equipment when it is in use, in consideration of the possibility of the Reno Mattress detaching from the equipment or mobile plant.
- Do not use the Reno Mattress Lifting Frame for any application other than its intended purpose.
- Under no circumstances are chains to be wrapped around the frame or connected in such a way that may cause injury or damage.
- Do not abuse the Reno Mattress Lifting Frame in any way which may result in personal injury and/or damage to the equipment.
- Check the condition of the Reno Mattress Lifting Frame (including D shackles and chains) before each use for any damage. If the behaviour of the Reno Mattress Lifting Frame equipment changes, check it immediately and return it to Geofabrics for service if necessary.
- Never modify the equipment in any way.

### **Site Conditions**

- The Reno Mattress Lifting Frame is designed for the application of Reno mattresses to suitable construction site areas. The Reno Mattress Lifting Frame should not be operated in conditions which could endanger the operator or other site personnel.

**RENO MATTRESS LIFTING FRAME COMPONENTS**

To ensure no parts are lost, all components should be stored and transported as a set, in such a way as not to cause damage to the equipment.



Figure 2

**Steel Frame (Fig 2)**

- Check the frame is not bent or has major dents.
- All corresponding components must stay together as complete sets.

**Chains, “D” shackles and pins (Fig 3 and 4)**

- All chains are connected with swivels and “D” shackles with pins (Fig 3, 4).
- Check pins are not falling out, chains are not damaged and correct bolts are in shackles.
- Check the lifting hooks work and are not damaged.
- Each chain must have a metal service tag indicating the safe working load and test date.
- The service tag should not be more than one year old.



Figure 3



Figure 4

**Geofabrics New Zealand Ltd.**  
14 Goodman Place, P.O. BOX 12536, Penrose, Auckland, New Zealand  
Tel. (+64) 9 6346495 - Fax (+64) 9 6346492, FREEPHONE 0800 60 60 20  
E-mail: sales@geofabrics.co.nz - Web site: www.geofabrics.co.nz  
Quality System AS/NZS ISO 9001:2015

The information contained herein is general in nature. In particular the content herein does not take account of specific conditions that may be present at your site. Site conditions may alter the performance and longevity of the product. Actual dimensions and performance may vary and in all cases we recommend that advice be obtained from a suitably qualified consulting engineer or industry specialist before proceeding with installation. © Copyright held by Geofabrics NZ Ltd. All rights are reserved and no part of this publication may be copied without prior permission.